

**EN**

# **Macro Key Manager User Manual**



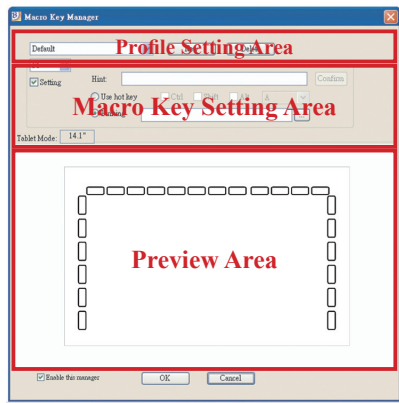
## Introduction

Macro Key Manager is a kind of special tablet application software. Through Macro Key Manager, you can set up the keyboard events (Copy= “Ctrl+C”) or hyperlinks which you use mostly. And then, save it as your favorite macro key profile.

We have several default profiles. Part of macro keys are default macro keys which the settings are fixed already and can not be modified. Other macro keys are Non-default macro keys and the setting of which can be defined and modified. However, if these default profiles can not meet your requirements, you can create new profiles by yourself.

Due to the keyboard events are not unified in different software, we provide the function of “open.exe” to enable the macro key manager profile according to the right software. If you do not set the “open.exe”, the macro key manager may work unexpectedly in different software.

# Macro Key Manager Control Panel Introduction




- **Profile Setting Area**  
You can select, create or modify macro key profiles
- **Macro Key Setting Area**  
You can set the function of an individual Macro Key here. There are two kinds of setting. One is keyboard event setting and the other is hyperlink setting. Also, you have to name the hint as you like to finish setting process.
- **Preview Area**  
You can see the tablet image and the macro keys of your tablet. By hovering to the macro key, the macro key hint will pop up next to the key.

# Installation

Once you install “Macro Key Manager” and plug the tablet




to your PC, the icon “” will be showed in System Tray. However, you can choose to disable the Macro Key Manager by click the right button. Once you disable Macro Key Manager or un-plug your tablet from PC, the original icon will

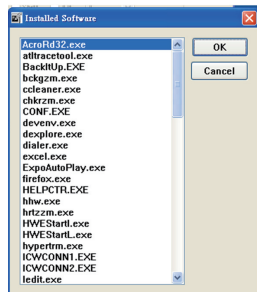
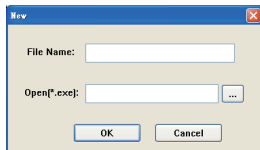


be changed into icon “”



## How to Set up a New Profile

1. Click “New” and name the profile.
2. If a profile is set for particular software, click the browser icon . If not, please skip this process and click “OK” to finish setting a new profile.
3. All installed software is showed. Click the right software. Click “OK”
4. Click “OK” to finish this setting.



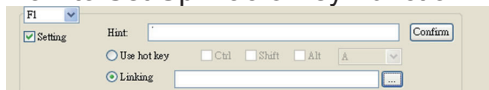
## How to Modify a Profile

1. select the profile you want to modify
2. following macro key setting steps to modify
3. click “OK”

## How to Delete a Profile

1. select the profile you want to delete
2. click “Delete”

## How to Set Up Macro Key Function



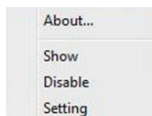
- a. click “Setting” to enable the setting function
- b. key-in the name you want to be as the macro key function hint (necessary)
- c. define the function as hot key or hyperlink
- d. click “Confirm”

### Setting:

Hover the cursor to the macro key manager icon in the system tray, and then click the right button.



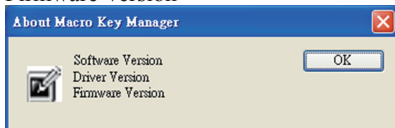
Windows 2000/XP/Vista Basic



Above Windows Vista Premium

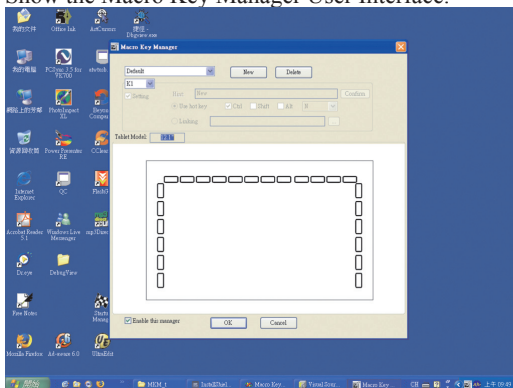
# ABOUT

Showing Macro Key Manager Version , Driver Version and Firmware Version

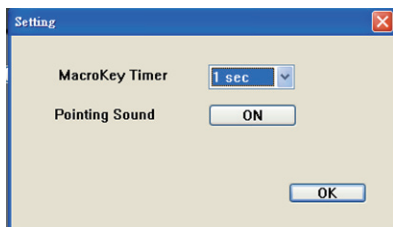


# Show

Show the Macro Key Manager User Interface.



# Setting



## Macro Key Time

You can set timer for how long macro key function will work. There are four different choices-- 0, 1, 1.5 and 3 seconds can be your alternatives which mean that only when you use a pen to point the macro key area for 0, 1, 1.5, or 3 seconds, the macro key works.



## Pointing Sound:

You can choose to get the pointing sound or not while the pen tip is pointing on the tablet.

## **Pen Pad (only in Windows 2000/XP/Vista/7 )**

This is tablet driver. Please reference the driver usage with driver manual.

### **Start Use**

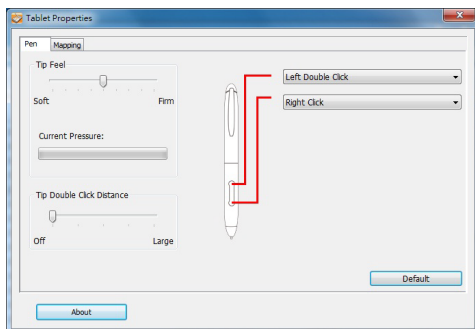
After setting profiles process, you can start to use macro key manager now.

Please select the profile you want to use and click “OK” and then this selected profile will be the active profile always.



## The Control Panel

- 1. Pen:** This page offers you a wide range of pen settings to customize the pen to your needs. Set up the functions as follows:



Function	Values	Description
Tip Feel	Soft ~ Firm	Adjusts the sensitivity of the pen tip and shows the result in Current Pressure bar. Use >>Details<< to setup more specific values for the pen tip.
Button configuration		Adjusts the function of the pen's two buttons by selecting from a drop-down list.
Tip Double Click Distance	Off ~ Large	Adjusts the time you have for a double click on pen tip. You can also disable the function by selecting Off.

**2. Mapping:** The working area offers a function for you to adjust the portion of the monitor you'd like to use as an active area for the pen. On a multi-monitor workstation, it's also possible to use one monitor as active area only.

Function	Values	Description
Mode	Pen, Mouse	Select whether the pen should behave like a pen or a classic mouse.
Monitor Area	All Screens, Monitor, Portion	Select >>All Screens<< to use the full monitor display area as a working area. If you have more than one monitor connected you can choose >>Monitor<< and select which monitor should be the active one. If you want to select a special area of the monitor choose >>Portion<< and select the active area by adjusting the red frame in the left >>Working Area Settings<< field.
Force Proportions	On, Off	Enable this field if your monitors have different resolutions and not the complete area is useable.

